



PURE Kanna

Edibles Catalogue

Sceletium Tortuosum Range



The Science of Serenity: Harnessing the Power of Kanna.

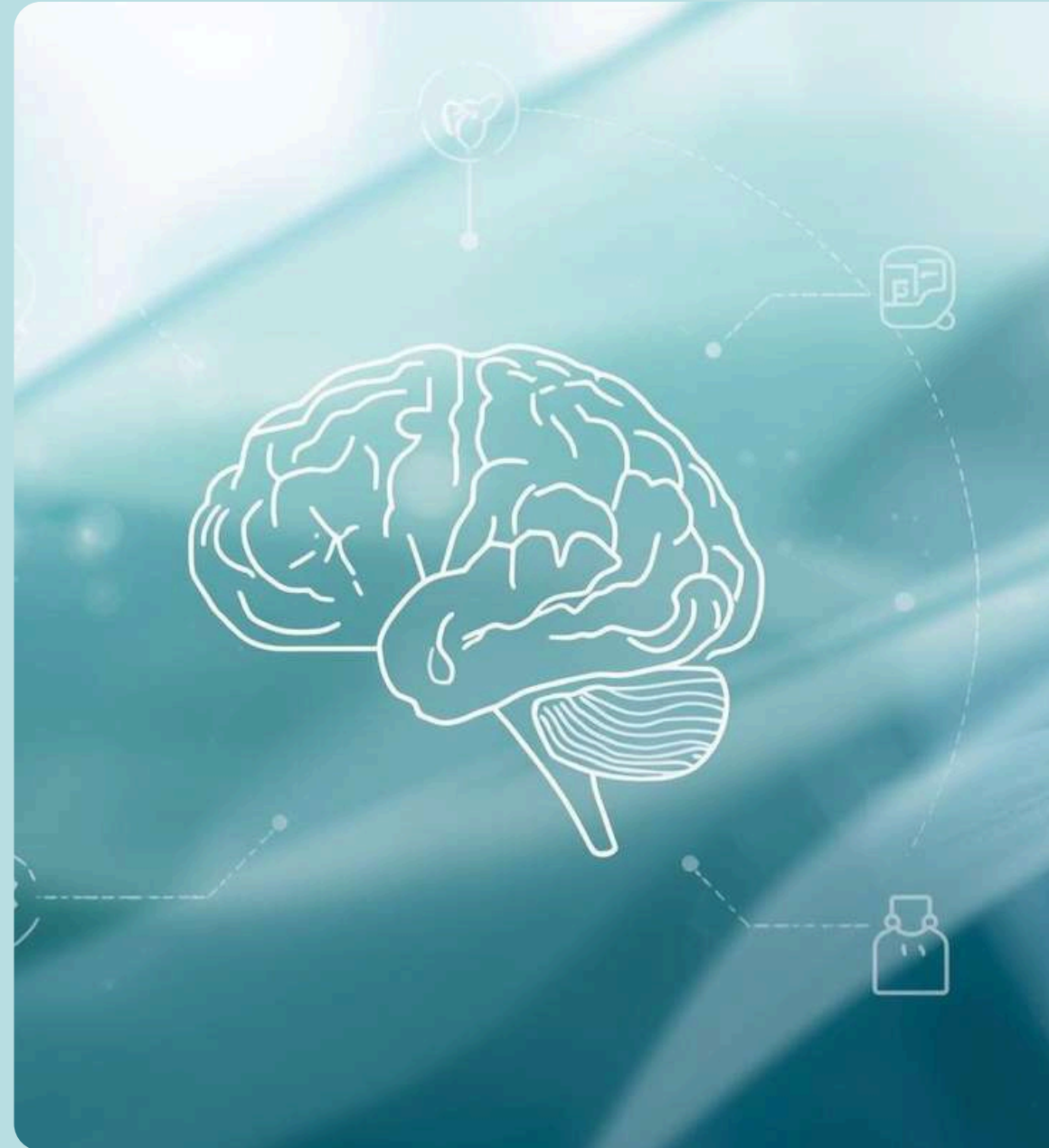
Pure Kanna introduces an elegant collection of functional gummies tailored for today's wellness market. By harnessing the power of traditionally fermented *Sceletium tortuosum*, standardised to an impressive 46% Delta 7 Mesembrenone, our gummies deliver a clean, bioavailable option for enhancing mood and supporting cognitive function.

We connect the rich heritage of indigenous knowledge with the accuracy of modern science, presenting a premium alternative to artificial mood enhancers.



UNDERSTANDING KANNA: NATURE'S SEROTONIN MODULATOR

Before exploring the Pure Kanna range, it is essential to understand the botanical powerhouse behind the formulation. *Sceletium tortuosum*, colloquially known as Kanna, is a succulent native to the arid regions of Southern Africa. For centuries, it has been the cornerstone of indigenous wellness rituals, utilised by the San and Khoikhoi people to manage stress, silence hunger, and elevate the spirit.



The Mechanism: How It Works

Unlike many synthetic mood enhancers that force a chemical change in the brain, Kanna works in harmony with your body's natural chemistry. It acts primarily as a Selective Serotonin Reuptake Inhibitor (SSRI) and a Phosphodiesterase 4 (PDE4) inhibitor. By naturally regulating how the brain processes serotonin, Kanna helps to:

- Lower Cortisol: Reducing the physical symptoms of stress and the "fight or flight" response.
- Enhance Cognitive Resilience: Allowing for a calm, focused mind without the "brain fog" associated with traditional sedatives.
- Open the Heart: Promoting a sense of social ease and emotional intelligence.



THE ALKALOID PROFILE

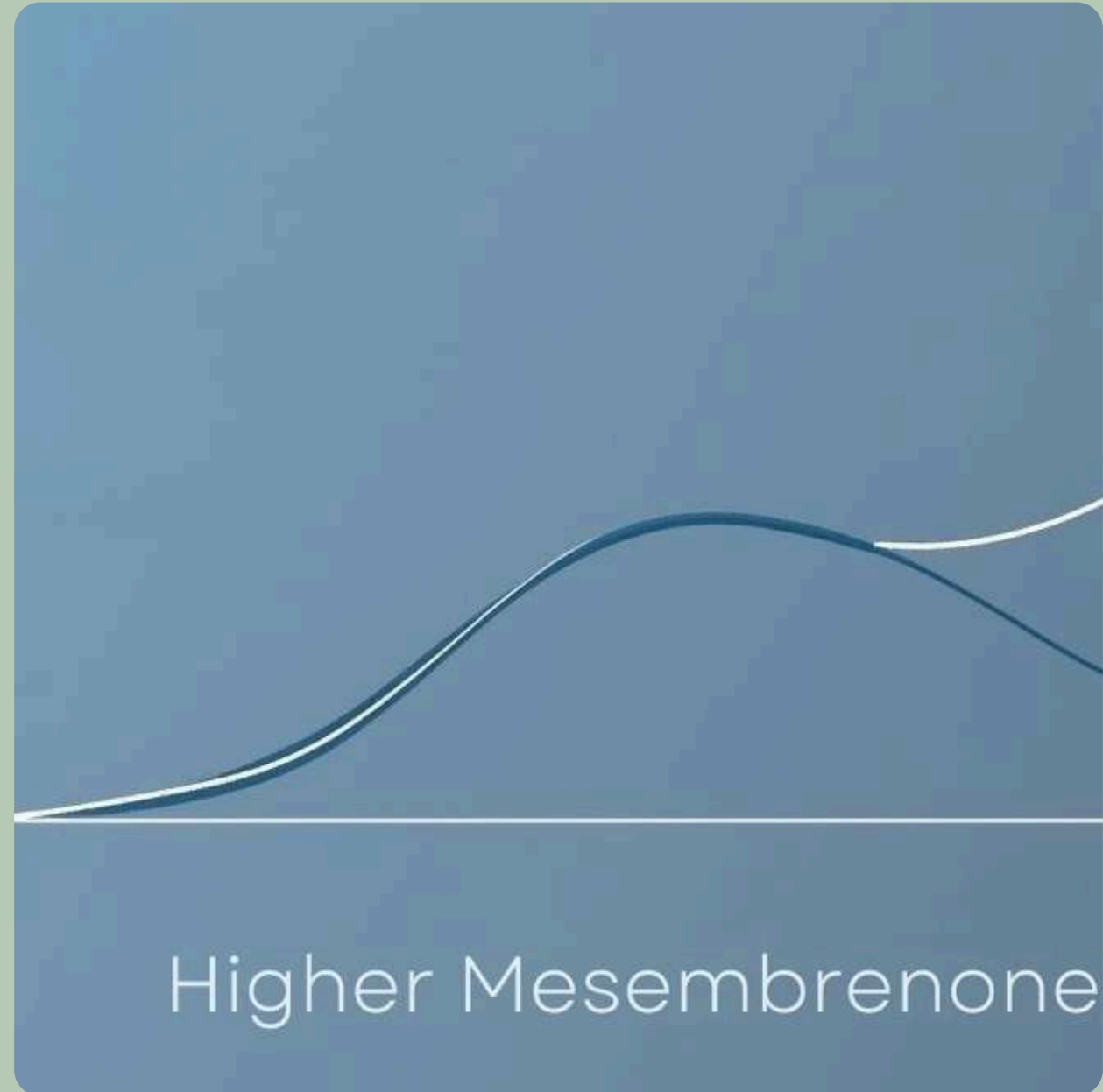
Why 46% Delta 7 Mesembrenone Matters

The efficacy of Kanna is determined by its alkaloid profile. Most generic Kanna products on the market are unstandardised, leading to unpredictable effects. Pure Kanna is defined by its precision.

The Role of Delta 7 Mesembrenone

Our extract is standardised to a high-performance 46% Delta 7 Mesembrenone profile. This specific alkaloid is the "performance" driver of the plant. While Mesembrine provides the initial lift, Delta 7 Mesembrenone is responsible for the sustained, uplifting calm and the anti-inflammatory neuroprotective benefits.

This standardisation ensures that every Pure Kanna gummy delivers the exact same therapeutic outcome, batch after batch.



THE ART OF FERMENTATION

Raw Sceletium contains high levels of oxalic acid, which can interfere with mineral absorption and limit the plant's efficacy. Following indigenous wisdom, Pure Kanna utilises an ancient fermentation process. Through controlled crushing and heat-exposure (fermentation), we transform the raw plant material. This process:

1. Neutralises oxalates, making the gummy gentle on the digestive system.
2. Pre-digests the plant fibers, making the alkaloids highly bioavailable for immediate absorption.
3. Enhances the alkaloid ratio, shifting the profile toward a more potent, functional state.



THE HOLISTIC BENEFIT

Pure Kanna is designed for the modern individual facing modern stressors. It offers a "middle path" in wellness:

- Non-Addictive: Unlike pharmaceuticals, Kanna does not lead to physical dependency.
- No Crash: There are no jitters or sudden drops in energy.
- Clean Label: Our formula respects the body —Sugar-free, Vegan, GMO-free, and Gluten-free.



Premium Edibles

About Our

Our formula is designed for health-conscious consumers, guaranteeing a clean and ethical delivery system for our powerful fermented extract:

Plant-Based Pectin (No Gelatin)

100% Vegan & Cruelty-Free

Sugar-Free Formulation

Gluten-Free & Non-GMO

Traditionally Fermented Plant Extract



@purekannaofficial



About Pure Kanna Gummies

Pure Kanna Gummies are not just supplements; they are a delivery system for one of nature's most potent cognitive tools. Our range is built upon the heritage of *Sceletium tortuosum* (Kanna), a sacred botanical native to Southern Africa, used for millennia to promote resilience, focus, and social harmony.

The Pure Kanna Difference:

46% Delta 7 Mesembrenone: While most extracts focus on broad alkaloids, we standardise for the high-performance Delta 7 profile. This ensures a consistent, predictable experience—whether you are seeking a subtle microdose or deep restoration.

Anciently Fermented: We respect the plant's history. Our Kanna undergoes a traditional fermentation process that pre-digests the raw material, increasing bioavailability and ensuring the full spectrum of beneficial alkaloids is ready for your system.

Clean Label Ethics: We believe that what carries the medicine is just as important as the medicine itself. Our gummies are 100% Vegan, crafted with Plant-Based Pectin instead of gelatin, and are entirely Sugar-Free, GMO-Free, and Gluten-Free.

By combining clinical-grade laboratory standards with time-honoured botanical processing, Pure Kanna provides a sophisticated, non-pharmaceutical path to mental well-being.

PURE
KANNA



About The Brand

Rooted in Heritage. Refined by Nature.

Pure Kanna was born from a deep respect for the indigenous peoples of Southern Africa and their knowledge of the earth's pharmacy. Our mission is to restore the integrity of this ancient plant through a meticulous, high-potency extraction process.

From the soil to the final gummy, every step of our process is handled with a commitment to purity and potency. We work exclusively with GMP-approved laboratories to ensure that every box delivered to our retail partners meets the highest global safety and efficacy standards.

THE PRODUCT LINEUP

15 Premium Gummies per Box | Standardised 46% Δ^7 -
Mesembrenone



THE PRODUCT LINEUP

15 Premium Gummies per Box | Standardised 46% Δ 7-
Mesembrenone



RANGE 1: Micro- Dose|10mg

The Daily Anchor

The subtle baseline for emotional intelligence and consistent cognitive flow.

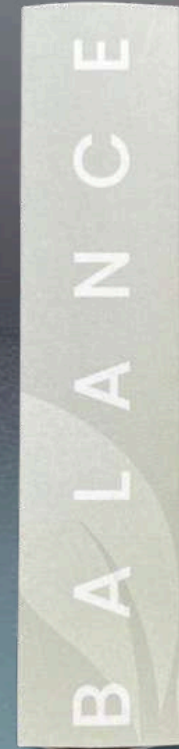
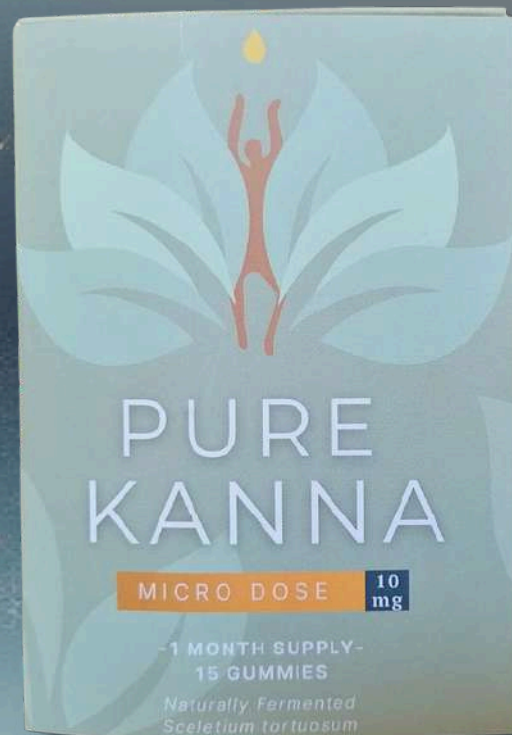
The Functional Profile: Focused on sub-perceptual nervous system regulation. It lowers the "baseline noise" of anxiety, allowing for a more focused and resilient day.

The Ritual: A daily morning practice. Best taken alongside a moment of journaling to set a balanced tone.

Dosage: 1 gummy per day, 1 day on 1 day off.



RANGE 1: Micro-Dose|10mg



MICRO-DOSE | 10mg

The Daily Anchor

Unit Count: 15 Gummies per Box

MOQ 10 +

Wholesale Price: R227.50 per Box

Suggested Retail (RRP): R455

Profit Margin: 50%



RANGE 2: ELEVATE |

17mg

The Social Spark

The heart-opening formulation for connection, clarity, and radiance.

The Functional Profile: Engineered to be noticeable. It targets social anxiety and "freezing," replacing it with a sense of verbal fluency and heart-centered presence.

The Ritual: Taken 30 minutes before social gatherings, creative brainstorming, or active engagement.

Dosage: 1x gummy for clarity, 2x gummy for radiance, 3x gummy for elevate



RANGE 2: ELEVATE | 17mg



THE SOCIAL SPARK RITUAL

"Heart-opening connection and inspired."

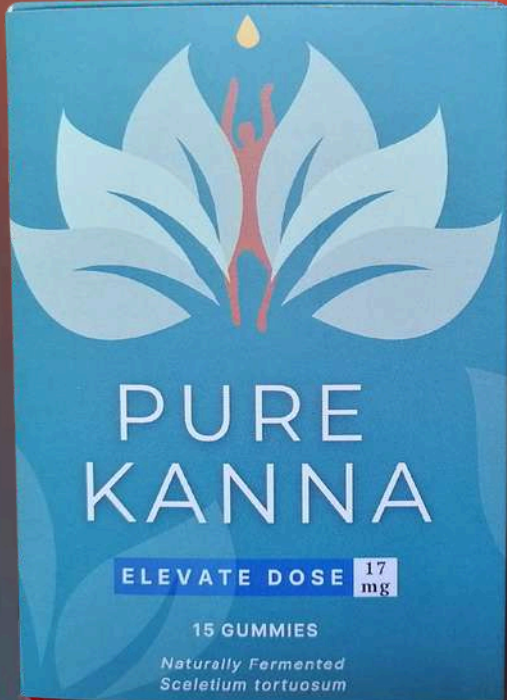
PAUSE
BREATHE INTO YOUR HEART SPACE
VISUALISE YOUR NATURAL ENERGY
EXPANDING OUTWARD

1 GUMMY FOR CLARITY
SHARPEN YOUR MENTAL ACUITY AND FOCUS

2 GUMMIES FOR RADIANCE
ENHANCE YOUR MOOD AND SOCIAL EASE

3 GUMMIES FOR ELEVATE
REACH PEAK HUMAN PRESENCE

FOLLOW THE 48-HOUR CYCLE TO SUSTAIN
YOUR INNER LIGHT

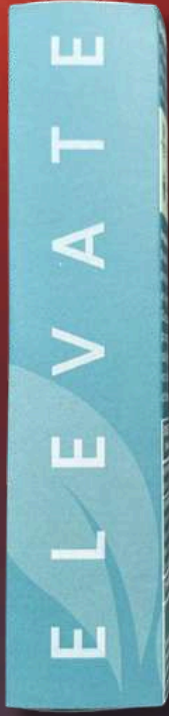


PURE KANNA

ELEVATE DOSE **17mg**

15 GUMMIES

Naturally Fermented
Sceletium tortuosum



DIRECTIONS: Take a dose every 48 hours. Follow our tiered ritual for targeted support: 1 gummy for Clarity> 2 gummies for Radiance> or 3 gummies for Peak Elevation. Engineered for enhanced mood and social ease.

- CALMING
- PROMOTES FOCUS
- COGNITIVE SUPPORT
- BALANCES MOOD
- ALLEVIATES ANXIETY & STRESS

Important Precautions & Warnings: Consult a healthcare professional before use if you have a medical condition, are pregnant or breastfeeding, or are taking medication containing SSRIs & MAOIs. Discontinue use if adverse reactions occur. This product is not registered or evaluated by SAHPRA for safety, quality, or efficacy. Store in a cool, dry place out of direct sunlight and keep out of reach of children.

Pineapple Flavour

SCELETIUM GUMMIES
(Sceletium tortuosum)

KEY INGREDIENTS - PER 2g SERVING
Plant Extract: Fermented Sceletium 17mg

OTHER INGREDIENTS:
Purified Water, Pectin, Maltitol, Steviol Glycosides, Inositol, Sorbitol, Citric Acid, Natural Flavouring, Natural Colour, Coating: Carnauba Wax, MCT Oil

Produced by:
PURE KANNA
info@purekanna.co.za
@PureKannaOfficial
www.purekanna.co.za

TYPICAL NUTRITIONAL INFORMATION

Nutritional Information (Typical Values per Gummy - 2g)	
Energy:	25 kJ (6 calories)
Total Carbohydrates:	3g
of which Sugars:	0g
of which Polyols (Sugar Alcohols):	3g



SCAN ME

Batch No: PK20102563 EXP: 2027-02-14

ELEVATE DOSE | 17mg —

The Social Spark

Unit Count: 15 Gummies per Box

MOQ 10 +

Wholesale Price: R327.50 per Box

Suggested Retail (RRP): R655.00

Profit Margin: 50%



RANGE 3: SEDATE |

24mg

The Deep Release

The potent restorative serving for profound relaxation and nervous system reset.

The Functional Profile: Encourages the body to move from 'Fight or Flight' into 'Rest and Digest' mode, quieting a busy mind and releasing physical tension.

The Ritual: An evening wind-down. Best used as a "digital detox" companion to transition into a state of absolute peace.

Dosage: 1x gummy for rest, 2x gummy for release, 3x gummy for sedate

RANGE 3: SEDATE |

24mg



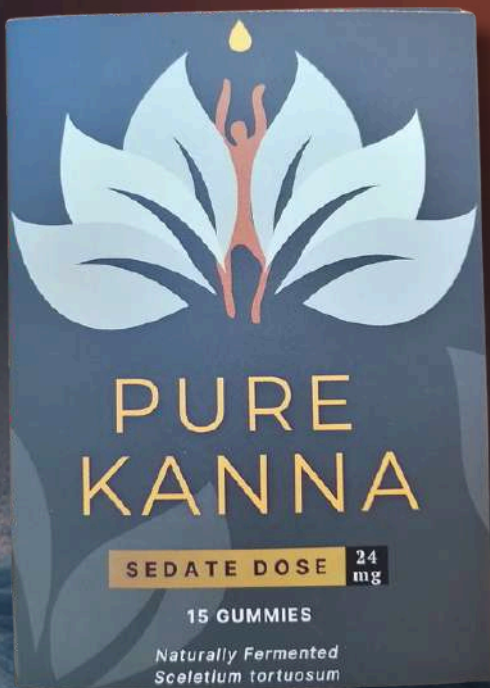
THE DEEP RELEASE RITUAL

"Profound physical restoration and mental peace"

DIM THE LIGHTS, STEP AWAY FROM THE DIGITAL WORLD, ACKNOWLEDGE THE DAY'S END WITH A DEEP EXHALE.

1 GUMMY FOR REST, A GENTLE EVENING WIND-DOWN
2 GUMMIES FOR RELEASE, DEEP HABITATION AND PHYSICAL TENSION RELEASE
3 GUMMIES FOR SEDATE, SUPPORT FOR DEEP RESTORATION & SLEEP

HONOUR YOUR BODY WITH THE 48-HOUR RESET



PURE KANNA

SEDATE DOSE 24 mg

15 GUMMIES

Naturally Fermented
Scelotium tortuosum



DIRECTIONS: Take a dose every 48 hours. Follow our tiered ritual for restorative depth: 1 gummy for Rest > 2 gummies for Release > or 3 gummies for Sedate. Supports deep relaxation and restorative sleep.

- CALMING
- PROMOTES FOCUS
- COGNITIVE SUPPORT
- BALANCES MOOD
- ALLEVIATES ANXIETY & STRESS

Important Precautions & Warnings: Consult a healthcare professional before use if you have a medical condition, are pregnant or breastfeeding, or are taking medication containing SSRIs & MAOIs. Discontinue use if adverse reactions occur. This product is not registered or evaluated by SAHPRA for safety, quality, or efficacy. Store in a cool, dry place out of direct sunlight and keep out of reach of children.

SCOLETIUM GUMMIES
(*Scelotium tortuosum*)

KEY INGREDIENTS: PER 2g SERVING:
Plant Extract: Fermented Scelotium 24mg

OTHER INGREDIENTS:
Purified Water, Fructose, Maltitol, Steviol Glycosides, Inositol, Sorbitol, Citric Acid, Natural Flavouring, Natural Colour, Coconut Camellia Wax, MCT Oil

Produced by:
PURE KANNA
info@purekanna.co.za
@PureKannaOfficial
www.purekanna.co.za

TYPICAL NUTRITIONAL INFORMATION

	Nutritional Information (Typical Values per Gummy - 2g)
Energy	22.8 kJ (5.4 calories)
Total Carbohydrates	0g
of which Sugars	0g
of which Polyols (Sugar Alcohols)	0g



Grape Flavour



Batch No: PK20102532 EXP: 2027-02-14

SCAN ME!

SEDATE DOSE | 24mg —

The Deep Release

Unit Count: 15 Gummies per Box

MOQ 10+

Wholesale Price: R277.50 per Box

Suggested Retail (RRP): R555.00

Profit Margin: 50%



SEASONAL KANNA PASTES | Delta-7

Bio-active. Full-spectrum. High-potency.

The Gold Standard: Enrichment

Our signature pastes are the pinnacle of botanical extraction. Unlike standard powders, these concentrates are refined to a 16–60% Delta-7 Mesembrenone profile. This specific alkaloid concentration is designed for those seeking a "High-Functioning Zen"—the perfect balance between cognitive clarity and profound emotional resilience.

Kanna is a mirror of the earth it grows in. Our four seasonal fermented harvests offer distinct profiles based on the sun, soil, and moisture levels at the time of picking

Product Features

- Precision Potency: 16–60% active Delta-7 alkaloids.
- Bio-Fermented: Enhanced bioavailability through traditional and scientific curing.
- Solvent-Free: Pure aqueous extraction preserving the plant's delicate terpene profile.

RANGE 4 SPRING HARVEST | Δ 16%



As the first rains stir the high-desert landscape, the Sceletium plant awakens with a surge of metabolic energy. Our Spring Harvest captures this peak vitality, yielding a bright, high-Mesembrine profile with a precise 16% Delta 7 concentration. This paste is engineered for the morning and the midday slump, offering a clean, cognitive lift and an expansive sense of sociability. By prioritising the plant's active growth phase, we've created an extract that sharpens focus and enhances mood, providing the mental clarity needed to navigate a demanding day with fluid ease and optimism.

CERTIFICATE OF ANALYSIS

Sample **Kanna Paste**
Lab ID : **JB25-445-01**

Harvest/Lot : **N/A**
Batch # : **N/A**
Batch Date : **N/A**
Sample Size Received : **2g**
Sample Matrix : **Extract**
Retail Product Size : **N/A**
Sampling Method : **N/A**

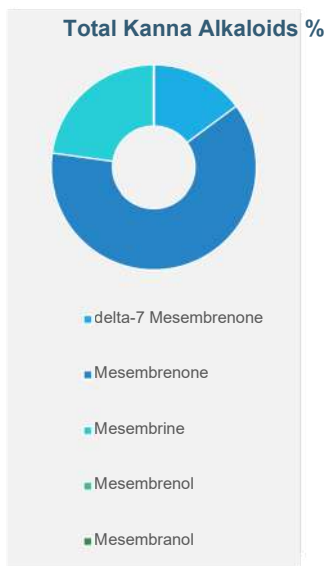
White Goma
Hankus Loubser

WC
RSA
hankus.loubser@gmail.com
+27 67 337 5362



DATES : Received: 2025/09/15
Started: 2025/10/01
Reported: 2025/10/02

Testing Laboratory Licence: 0000001451.-.1



Samples analysed as received. Solid samples expressed on a dry weight basis. Unless otherwise indicated, samples were received in containers fit for purpose.

Attention is drawn to the limitation of liability, indemnification and jurisdiction issues defined therein.

WARNING: The sample(s) to which the findings recorded herein (the "Findings") relate was (were) drawn and / or provided by the Client or by a third party acting at the Client's direction. The Findings constitute no warranty of the sample's representativity of all goods and strictly relate to the sample(s). The Company accepts no liability with regard to the origin or source from which the sample(s) is/are said to be extracted.

Any unauthorised alteration, forgery or falsification of the content or appearance of this document is unlawful, and offenders may be prosecuted to the fullest extent of the law.

FOOTNOTES:

LN1 Insufficient sample for analysis
LN2 Sample listed, but not received
LN3 This analysis is not covered by the scope of accreditation Performed outside laboratory Limit of Quantification The sample was not analysed for this analyte

Gregory Ondrejkojvic

Laboratory Manager

Signature

2025/10/02

Date

Sample: Kanna Paste
Date reported: 2025/10/02

White Goma
Page 1 | 2

Gregory
Andrew
Ondrejkojvic
Digitally signed by
Gregory Andrew
Ondrejkojvic
Date: 2025.10.02
09:41:57 +02'00'



CERTIFICATE OF ANALYSIS

Sample **KannaPaste**
Lab ID **JB25-445-01**

White Goma
HankusLoubser

WC
RSA
hankus.loubser@gmail.com
+27 67 337 5362



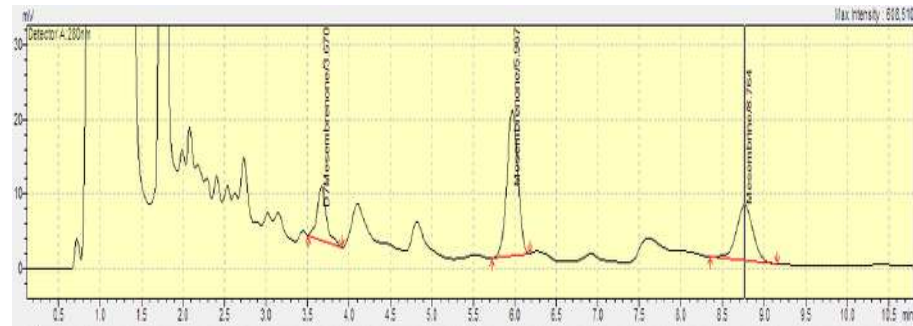
DATES : Received 2025/09/15
Started: 2025/10/01
Reported 2025/10/02

Testing Laboratory Licence: 0000001451.-.1

Alkaloids	Method Code	LOQ	Area %	%
delta-7 Mesembrenone	ME-EA-006	0.0001	16.053	0.0217
Mesembrenone	ME-EA-006	0.0001	53.2519	0.0910
Mesembrine	ME-EA-006	0.0001	30.6952	0.0333
Mesembrenol	ME-EA-006	N/A	ND	ND
Mesembranol	ME-EA-006	N/A	ND	ND
Total Alkaloids	ME-EA-006	0.0003	N/A	0.1459

ME-EA-006: The determination of Alkaloids in plant material and extracts by high performance liquid chromatography (HPLC) with ultra-violet (UV) detection and gas chromatography - mass spectrometry (GCMS) followed by NIST library spectrum search.

Kanna Paste HPLC Chromatogram



Gregory Ondrejovic
Laboratory Manager

Gregory Ondrejovic
Signature

2025/10/02
Date





RANGE 4 SUMMMER HARVEST | Δ 46.8%

Under the relentless intensity of the mid-summer sun, the plant reaches a state of robust maturity. The Summer Harvest represents a sophisticated state of equilibrium, featuring a balanced 48% Delta 7-Mesembrenone profile. This is the "Adaptogen of the Sun," designed to provide resilience against the stressors of high-output lifestyles. It sits perfectly in the transition between day and night, offering enough clarity for continued productivity while beginning the vital process of nervous system regulation. It is a grounding force that keeps the spirit centered during the year's most active season.

CERTIFICATE OF ANALYSIS

Sample **Kanna 04-11-2025**
Lab ID : **JB25-586-01**

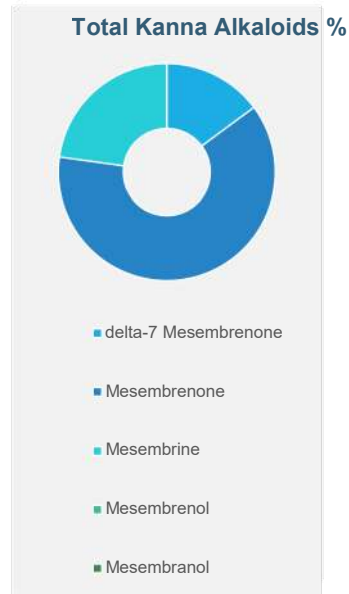
Harvest/Lot : **N/A**
Batch # : **N/A**
Batch Date : **N/A**
Sample Size Received : **2g**
Sample Matrix : **Extract**
Retail Product Size : **N/A**
Sampling Method : **N/A**

White Goma
Hankus Loubser
WC
RSA
hankus.loubser@gmail.com
+27 67 337 5362



DATES : Received: 2025/11/04
Started: 2025/11/12
Reported: 2025/11/12

Testing Laboratory Licence: 0000001451.-.1



Samples analysed as received. Solid samples expressed on a dry weight basis. Unless otherwise indicated, samples were received in containers fit for purpose.

Attention is drawn to the limitation of liability, indemnification and jurisdiction issues defined there

WARNING: The sample(s) to which the findings recorded herein (the "Findings") relate was (were) drawn and / or provided by the Client or by a third party acting at the Client's direction. The Findings constitute no warranty of the sample's representativity of all goods and strictly relate to the sample(s). The Company accepts no liability with regard to the origin or source from which the sample(s) is/are said to be extracted.

Any unauthorised alteration, forgery or falsification of the content or appearance of this document is unlawful, and offenders may be prosecuted to the fullest extent of the law.

FOOTNOTES:

- IS** Insufficient sample for analysis
- NR** Sample listed, but not received
- +** This analysis is not covered by the scope of accreditation
- o** Performed by outside laboratory
- LQ** Limit of Quantification
- The sample was not analysed for this analyte

Gregory Ondrejkojic
Laboratory Manager Signature

2025/11/12
Date



CERTIFICATE OF ANALYSIS

Sample **Kanna04-11-2025**
Lab ID **JB25-586-01**

White Goma
HankusLoubser

WC
RSA
hank.us.loubser@gm ail.com
+27 67 337 5362



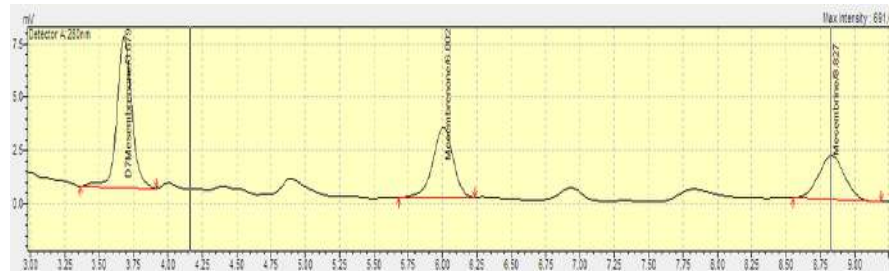
DATES : Receiver: 2025/11/04
Started: 2025/11/12
Reported: 2025/11/12

Testing Laboratory Licence: 0000001451.-.1

Alkaloids	Method Code	LOQ	Area %	%
delta-7 Mesembrenone	ME-EA-006	0.0001	46.8515	0.0217
Mesembrenone	ME-EA-006	0.0001	29.5171	0.0910
Mesembrine	ME-EA-006	0.0001	23.6314	0.0333
Mesembrenol	ME-EA-006	N/A	ND	ND
Mesembranol	ME-EA-006	N/A	ND	ND
Total Alkaloids	ME-EA-006	0.0003	N/A	0.1459

ME-EA-006: The determination of Alkaloids in plant material and extracts by high performance liquid chromatography (HPLC) with ultra-violet (UV) detection and gas chromatography -mass spectrometry (GCMS) followed by NIST library spectrum search.

Kanna 04-11-2025 HPLC Chromatogram



Gregory Ondrejko
Laboratory Manager Signature

2025/11/12
Date



RANGE 4 AUTUMN HARVEST | Δ 66%



As the plant prepares for dormancy, its internal chemistry pulls inward, shifting toward a heavier, more stable composition. Our Autumn Harvest utilises a signature slow, cold-fermentation technique to preserve this late-season transition, resulting in a profound 66% Delta 7 profile. Intended exclusively for "The Great Unwind," this paste is dedicated to the dissolution of physical tension and the silencing of mental noise. It works in harmony with the body's circadian rhythm to melt away the "somatic armour" of the day, preparing the mind for deep, restorative rest without any trace of morning grogginess.

CERTIFICATE OF ANALYSIS

Sample **EuphoricChanna Kougoed**
Lab ID :**JB25-222-01**

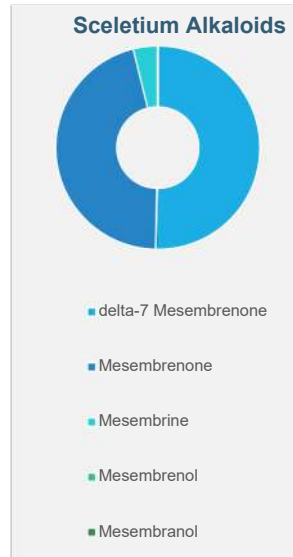
Harvest/Lot : **N/A N/A N/A 5 x**
Batch # : **Chews**
Batch Date : **Chewable Cures**
Sample Size Received : **N/A N/A**
Sample Matrix :
Retail Product Size :
Sampling Method :

White Goma
Hankus Loubser
WC
RSA
hankus.loubser@gmail.com
+27 67 337 5362



DATES :Received:2025/05/15
Started: 2025/05/21
Reported: 2025/05/22

Testing Laboratory Licence: 0000001451.-.1



Samples analysed as received. Solid samples expressed on a dry weight basis. Unless otherwise indicated, samples were received in containers fit for purpose.

Attention is drawn to the limitation of liability, indemnification and jurisdiction issues defined therein.

WARNING: The sample(s) to which the findings recorded herein (the "Findings") relate was (were) drawn and / or provided by the Client or by a third party acting at the Client's direction. The Findings constitute no warranty of the sample's representativity of all goods and strictly relate to the sample(s). The Company accepts no liability with regard to the origin or source from which the sample(s) is/are said to be extracted.

Any unauthorised alteration, forgery or falsification of the content or appearance of this document is unlawful, and offenders may be prosecuted to the fullest extent of the law.

FOOTNOTES:

IS Insufficient sample for analysis
LNR Sample listed, but not received
+ This analysis is not covered by the scope of accreditation Performed outside laboratory Limit of Quantification The sample was not analysed for this analyte

Gregory Ondrejko
Laboratory Manager

Signature

2025/05/22
Date

Sample:Euphoric Channa Kougoed
Date reported:2025/05/22

White Goma
Page 1 | 2

**Gregory
Andrew
Ondrejko**

Digitally signed by
Gregory Andrew
Ondrejko
Date: 2025.05.22
10:33:32 +02'00'



CERTIFICATE OF ANALYSIS

Sample **EuphoricChannaKougoed**
Lab ID **JB25-222-01**

White Goma
HankusLoubser

WC
RSA
hankus.loubser@gmail.com
+27 67 337 5362



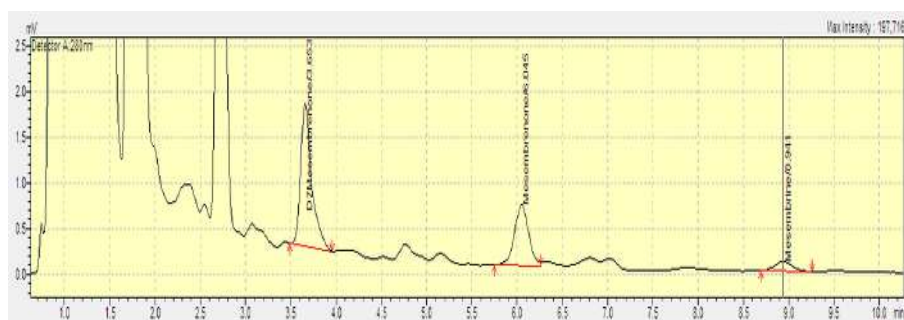
DATES : Receiver: 2025/05/15
Started: 2025/05/21
Reported: 2025/05/22

Testing Laboratory Licence: 0000001451.-.1

Alkaloids	Method Code	LOQ	Area %	mg/chew
delta-7 Mesembrenone	ME-EA-006	0.001	60.676	0.052
Mesembrenone	ME-EA-006	0.001	33.187	0.047
Mesembrine	ME-EA-006	0.001	6.137	0.004
Mesembrenol	ME-EA-006	N/A	N/A	ND
Mesembranol	ME-EA-006	N/A	N/A	ND
Total Alkaloids	ME-EA-006	0.003	N/A	0.1035

ME-EA-006: The determination of Alkaloids in plant material and extracts by high performance liquid chromatography (HPLC) with ultra-violet (UV) detection and gas chromatography - mass spectrometry (GCMS) followed by NIST library spectrum search.

Euphoric Channa Kougoed HPLC Chromatogram



Gregory Ondrejko
Laboratory Manager

Signature

2025/05/22
Date



RANGE 4 WINTER

HARVEST | Δ 28%

In the quiet of winter, the plant enters a state of deep conservation and hardy resilience. The Winter Harvest is a specialised extract with a 28% Delta 7 concentration, emphasising the plant's most enduring alkaloids. This profile is designed for "Steady-State Support," providing a gentle, consistent baseline of emotional stability during the darker, colder months. It is less about the "rush" and more about the "glow"—offering a subtle, protective layer for the nervous system that helps maintain internal warmth and a calm, collected headspace through the harshest conditions.



CERTIFICATE OF ANALYSIS

Sample **Kanna Paste**
Lab ID : **JB25-362-01**

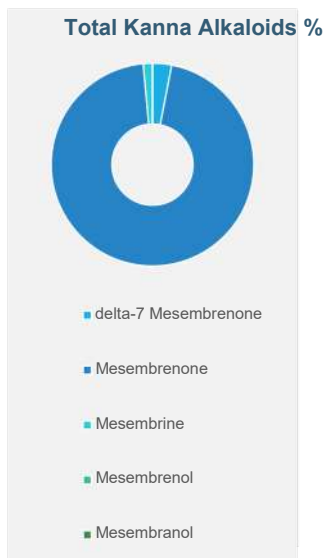
Harvest/Lot : **N/A**
Batch # : **N/A**
Batch Date : **N/A**
Sample Size Received : **2g**
Sample Matrix: **Extract**
Retail Product Size : **N/A**
Sampling Method : **N/A**

White Goma
Hankus Loubser
WC
RSA
hankus.loubser@gmail.com
+27 67 337 5362



DATES : Received: 2025/07/23
Started: 2025/08/12
Reported: 2025/08/21

Testing Laboratory Licence: 0000001451.-.1



Samples analysed as received. Solid samples expressed on a dry weight basis. Unless otherwise indicated, samples were received in containers fit for purpose.

Attention is drawn to the limitation of liability, indemnification and jurisdiction issues defined therein.

WARNING: The sample(s) to which the findings recorded herein (the "Findings") relate was (were) drawn and / or provided by the Client or by a third party acting at the Client's direction. The Findings constitute no warranty of the sample's representativity of all goods and strictly relate to the sample(s). The Company accepts no liability with regard to the origin or source from which the sample(s) is/are said to be extracted.

Any unauthorised alteration, forgery or falsification of the content or appearance of this document is unlawful, and offenders may be prosecuted to the fullest extent of the law.

FOOTNOTES:

IS Insufficient sample for analysis
NR Sample listed, but not received
Q This analysis is not covered by the scope of accreditation Performed outside laboratory Limit of Quantification The sample was not analysed for this analyte

Gregory Ondrejko
Laboratory Manager

Signature

2025/08/21
Date

Sample: Kanna Paste
Date reported: 2025/08/21

White Goma
Page 1 | 2

**Gregory
Andrew
Ondrejko**
Digitally signed by
Gregory Andrew
Ondrejko
Date: 2025.08.21
15:36:19 +02'00'



CERTIFICATE OF ANALYSIS

Sample **KannaPaste**
Lab ID **JB25-362-01**

White Goma
HankusLoubser

WC
RSA
hankus.loubser@gmail.com
+27 67 337 5362



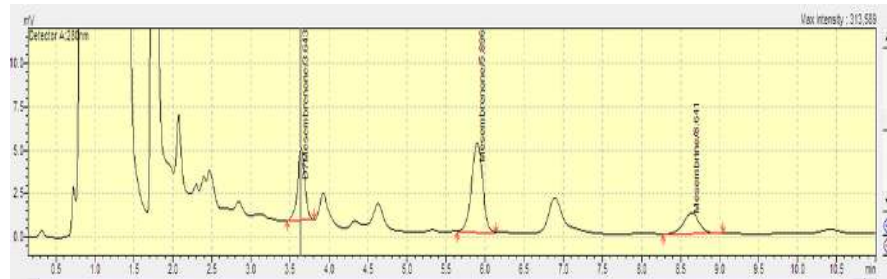
DATES : Received: 2025/07/23
Started: 2025/08/12
Reported: 2025/08/21

Testing Laboratory Licence: 0000001451.-.1

Alkaloids	Method Code	LOQ	Area %	%
delta-7 Mesembrenone	ME-EA-006	0.0001	28.5053	0.0227
Mesembrenone	ME-EA-006	0.0001	53.8226	0.7092
Mesembrine	ME-EA-006	0.0001	17.6721	0.0109
Mesembrenol	ME-EA-006	N/A	ND	ND
Mesembranol	ME-EA-006	N/A	ND	ND
Total Alkaloids	ME-EA-006	0.0003	N/A	0.7427

ME-EA-006: The determination of Alkaloids in plant material and extracts by high performance liquid chromatography (HPLC) with ultra-violet (UV) detection and gas chromatography - mass spectrometry (GCMS) followed by NIST library spectrum search.

Kanna Paste HPLC Chromatogram



Gregory Ondrejko
Laboratory Manager

Gregory Ondrejko
Signature

2025/08/21
Date



KANNA Paste | per gram

Standard Retail Units:
R450.00 per gram.

Wholesale Base tier:
R225.00 per gram for a minimum order of 10 grams.

Bulk tier:
R250.00 per gram for 500g

Master Bulk tier:
R170.00 per gram for orders of 1,000 grams (1kg) or more.

Ordering Information

Sample Size: 1g

Bulk Tiers: 500g / 1kg / 5kg / 25kg

Lead Time: 7-14 Business Days for International Shipping



Contact Information

Cape Point, Cape Town

Website: www.purekanna.co.za

Phone: +27 67 337 5362

@purekannaofficial

info@purekanna.co.za